

## MOTORIZATION FOR IMMERSED POOL COVER AUTOMATIC LIMIT SWITCH MANAGING WATERPROOF

### TECHNICAL FEATURES :

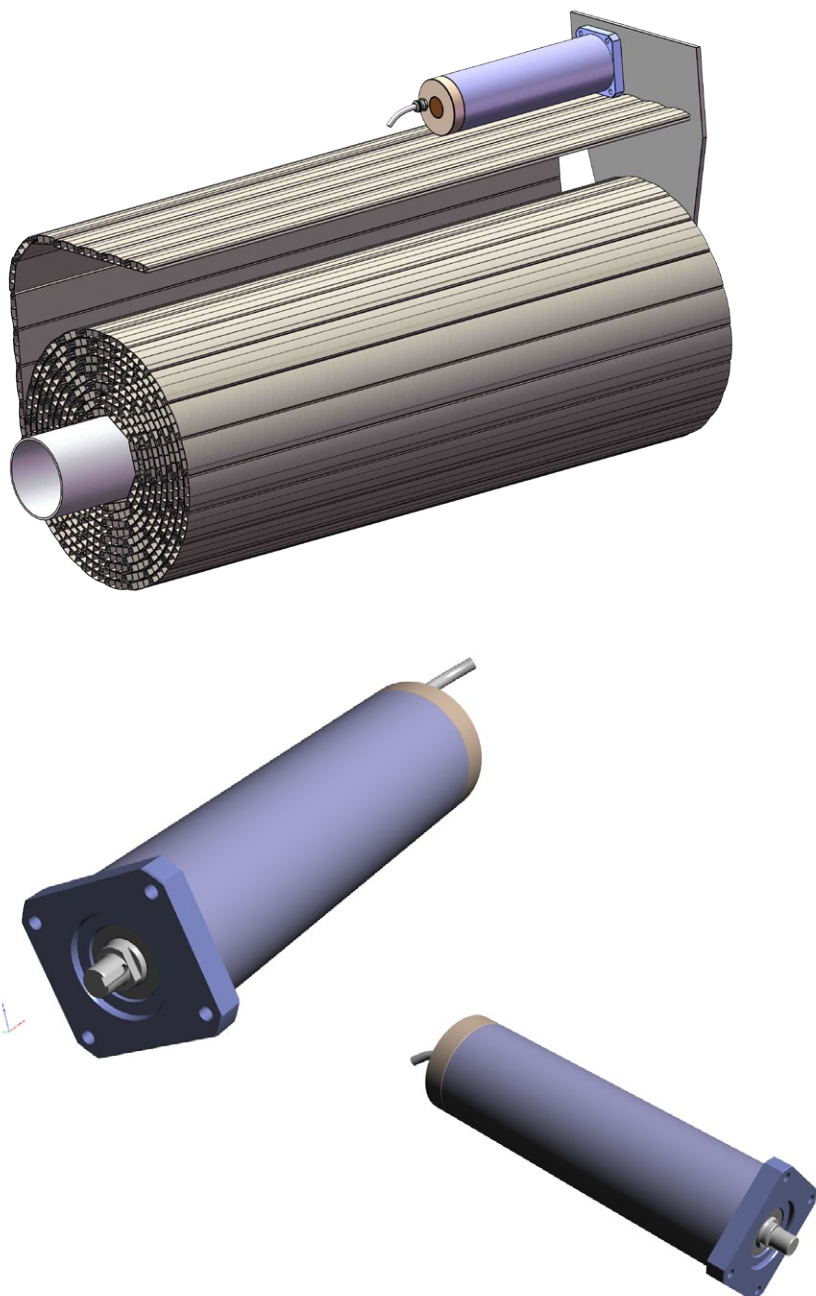
- 24 Vdc motor
- Stainless steel 316 L shaft
- Radial output cable
- IP68 waterproofness class
- 200 to 300 N.m motorization

### COMPLY WITH STANDARDS :

- NF EN 55014-2
- NF EN 60335-1
- NF EN 61000-6-3

These standards comply with the French rules of the NPF 90308 standards

### OPERATION PRINCIPLE :

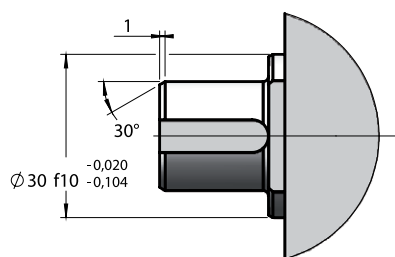
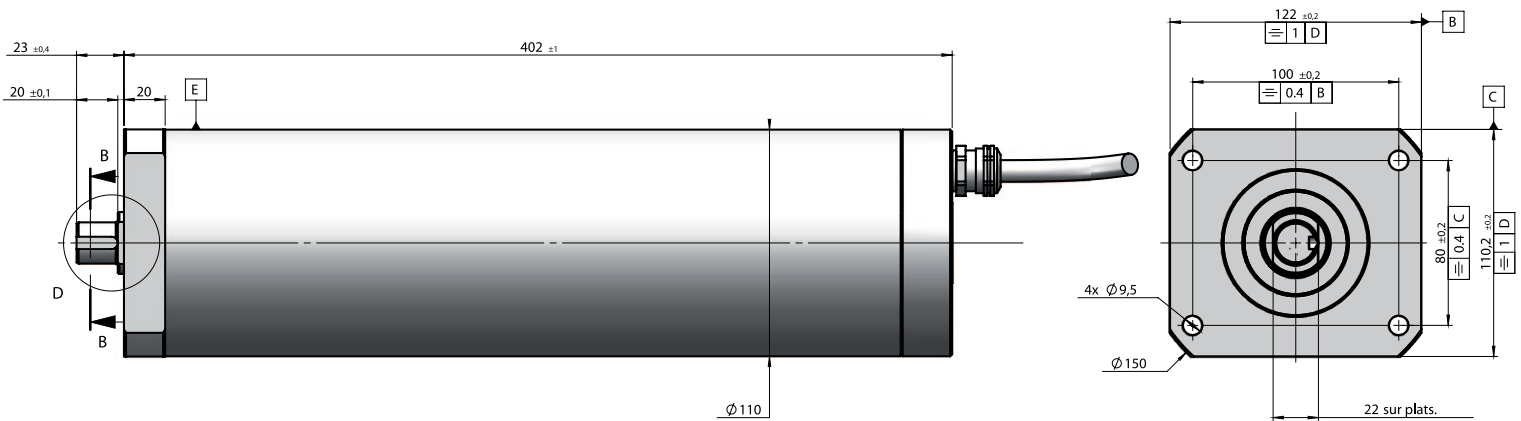


# TECHNICAL FEATURES

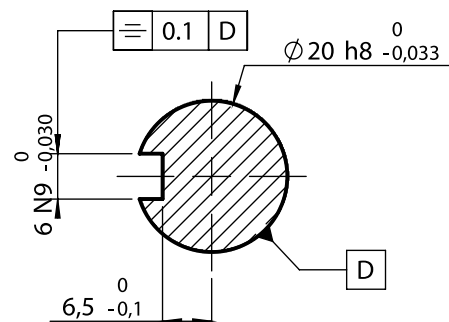
Features		300 N.m motor
Reduction ratio		1/1068
Tension d'alimentation		24 volts (-15%, +20%)
Consumption at max. torque (±20%)		8,0 A (±10%)
Protection class IP		IP68*
Nominal torque		300 N.m
Speed(RPM)	à vide	4,0 RPM (±10%)
	à couple nominal	3,0 RPM (±10%)
Motor shaft		Stainless steel 316 L
Materials	Cartridge	PVC
	Motor shaft	Stainless steel 316 L
End run sensors		Revolutions motor counter
Brake		Magnetic
Flexible cable	Diameter	Ø 9mm
	Composition	2x1,5mm <sup>2</sup> + 3x0,34mm <sup>2</sup>
	Waterproofing	IP68 : with resin
Protection against oxydization		Motor under nitrogen : neutral atmosphere
Max. permissible radial load on the motorization		400 kg - 4000 N
Conditions d'utilisation	Period of use	6 months / year
	Number of cycles/day	4
	Cycle duration	4 to 6 minutes
	Operating water T°	0°C to +45°C

\* Put under pressure at 0.8 bar guarantee the waterproofness

# DIMENSIONS



DETAIL D



B-B CUT VIEW