



**FOR SLIDING GATES UNTIL 800 KG**  
**REVERSIBLE GEAR MOTOR**  
**AUTOMATIC UNLOCKING BRAKE**  
**OUTPUT SHAFT ACCORDING TO SPECIFICATIONS**

### TECHNICAL FEATURES :

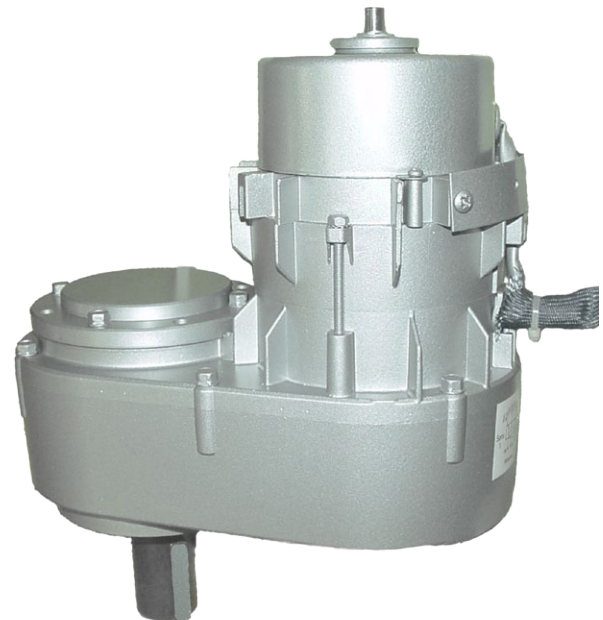
- Asynchronous motor
- Without maintenance
- Thermacl cut-out
- 2 directions of rotation
- Single phase with capacitor
- Inrush of current brake : 24V or 230V with diode rectifier
- Class F insulation
- IP44 protection
- Working temperature : -20°C to 85°C
- Relative hygrometry until 95%

### OPTIONS AVAILABLE ON DEMAND :

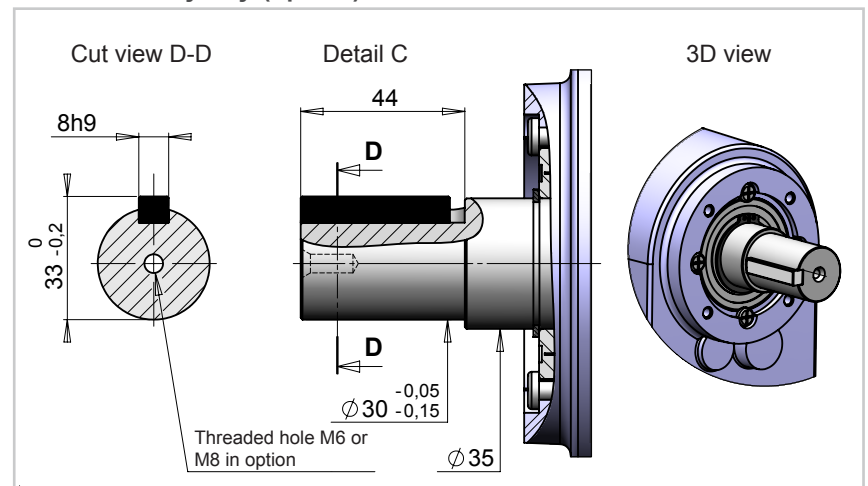
- Three phase or direct current
- Output shaft according to specifications
- Specific speed
- Lack of current brake
- Rev-counter card
- Terminal box (N800 only)
- Fastening point accord to specifications
- Fastening spacers

### COMPLY WITH STANDARDS :

- EN 60335-1
- EN 60034-1

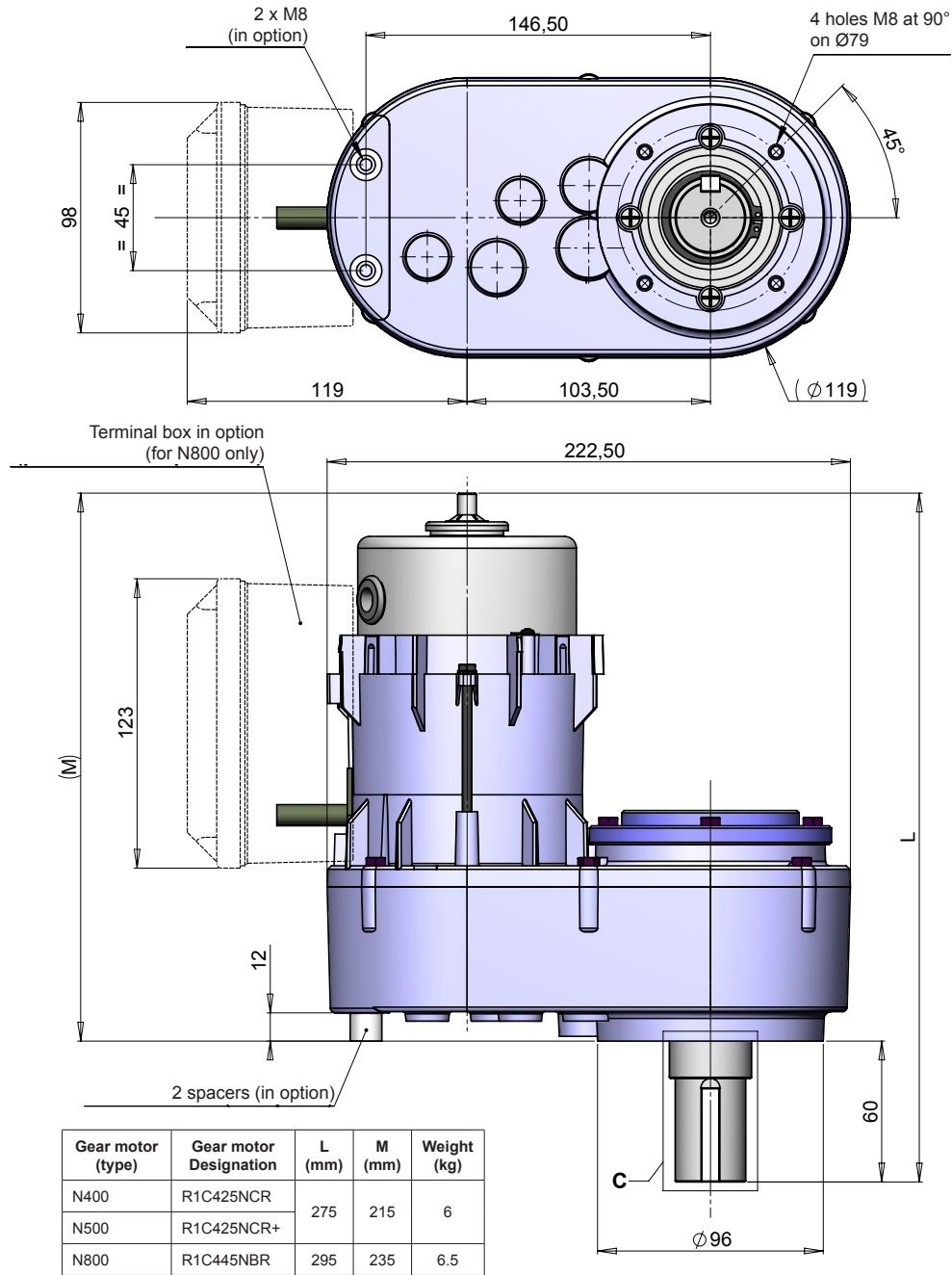


### Shaft with keyway (option)





## DIMENSIONS



## TECHNICAL FEATURES

Type & Designation of Gear motor	Voltage / Frequency	Input power (watt)	Torque motor <sup>(1)</sup>	Nominal speed (RPM)	Capacitor (µF)	Startup torque (Nm)	Intensity under 230V (A)	Service class	Gear ratio	Gearbox speed (RPM)	Nominal torque (Nm)
N400 / R1C425NCR	230V/50Hz	75	oui	1350	5	0,23	0,38	S1	1/59	23	10,6 <sup>(3)</sup>
N500 - R1C425NCR+	230V/50Hz	130	oui	1350	6	0,27	0,61	S1	1/42	32	9,1 <sup>(3)</sup>
N800 - R1C445NBR	230V/50Hz	160	non	1300	6	0,55	0,7	S3 : 30% cycle of 6 min <sup>(2)</sup>	1/42	32	9,9

(1) : A torque motor can support a mechanical blocking without excessive warming

(2) : Added an optional fan allow a S1 service class

(3) : Equal to start up torque (=maximal torque)