

**FOR DISPLAY UNTIL 2M<sup>2</sup>**  
**BRUSHLESS MOTORISATION**  
**INTENSIVE USING**

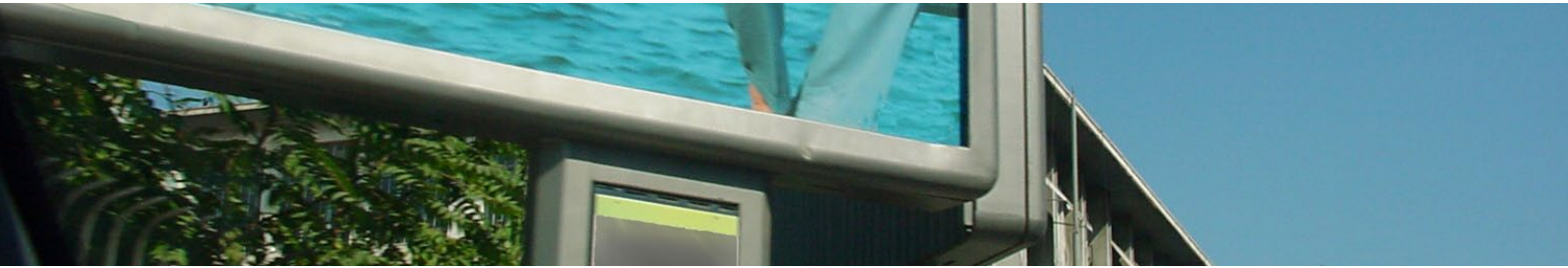
**TECHNICAL FEATURES :**

- Brushless direct current motor
- Zinc-plated steel cylindrical tube
- Supply voltage 24VDC
- Thermal cut-out 104°C
- Insulation class E(120°) VDE 0530
- IPX5 Protection
- S3 service class
- Working temperature : -40°C to +85°C

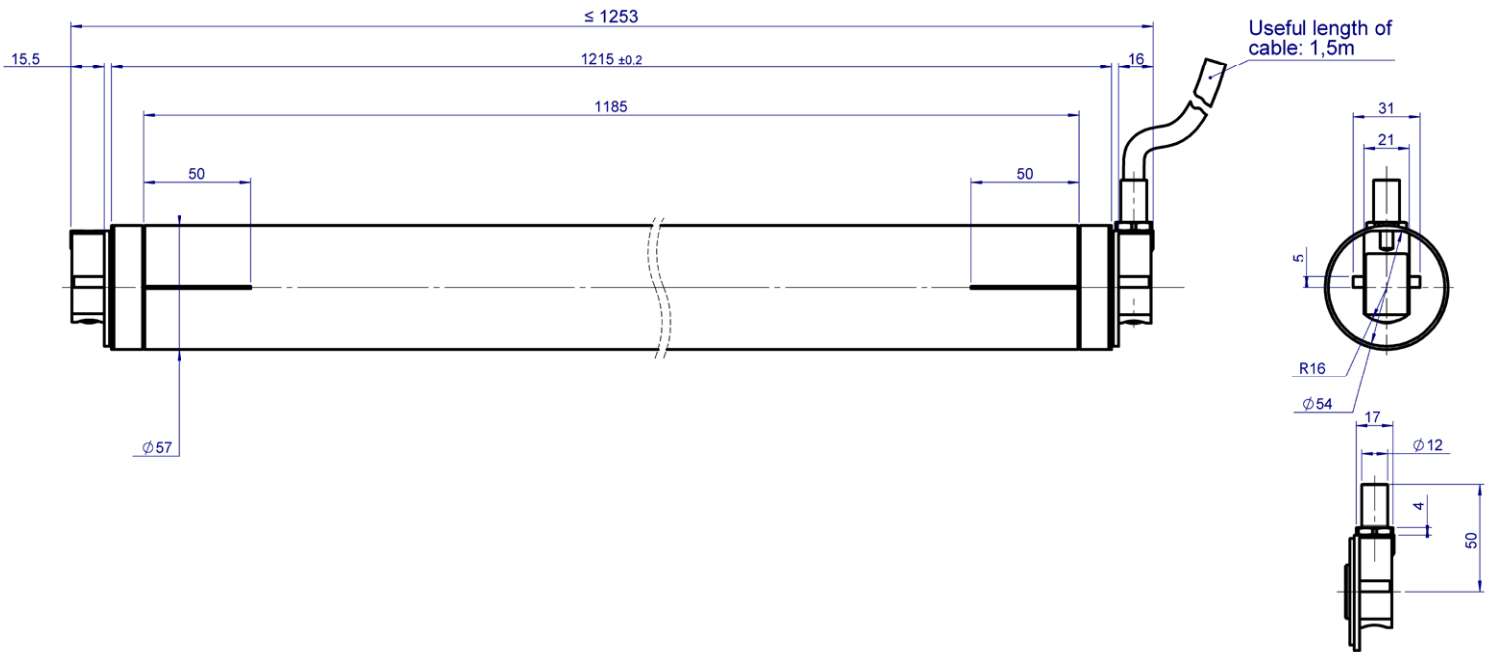

**COMPLY WITH STANDARDS :**

- EN 60335-1
- EN 60034-1

Ø57mm Reference	Nominal power consumption (W)	Power rating (W)	Nominal current (A)	Starting current (A)	Nominal motor rotation (RPM)	Ratio	Nominal torque (Nm)	Starting torque (Nm)	Nominal speed (RPM)	Tube length (mm)	Weight (kg)
<b>Brushless motors 24V - 50Hz</b>											
RL 057	50	29,8	2,1	8,4	3640	1/9,25	0,7	2,5	394	1185	4,6



## DIMENSIONS



## ELECTRICAL WIRING

