



**SIREM**

CRÉATEUR DE MOTORISATIONS



**B**



# SIREM

MORE THAN 75 YEARS OF DEVELOPMENT



## **SIREM : A DESIGNER AND MANUFACTURER OF ELECTRIC MOTORS SINCE 1928**

SINCE 1928, SIREM HAS BEEN DESIGNING INNOVATIVE MOTORIZATION SOLUTIONS TO SUPPORT THE MAJOR CHANGES THAT OCCURRED IN THE 20TH CENTURY:

- 1950: REVOLUTION IN HOUSEHOLD APPLIANCES
- 1960: MECHANIZATION OF THE AGRICULTURE
- 1970: INDUSTRY AUTOMATION
- 1990: DEVELOPMENT OF SERVICES AND LEISURE ACTIVITIES
- 2000: NEED FOR SECURITY AND WELL BEING

AS EARLY AS 1950, BY CULTURE AND BY NECESSITY, SIREM EXTENDED THE COMPANY'S ACTIVITIES TO BEYOND THE FRENCH BORDERS.

TODAY, SIREM IS A MAJOR ACTOR IN EUROPE, AND ITS PRODUCTS ARE AVAILABLE ALL OVER THE WORLD.



## **SIREM : A STRATEGY FOR THE FUTURE**

DESIGNS AND MANUFACTURES INNOVATIVE SOLUTIONS AND SYSTEMS FOR ELECTRIC MOTORS.

DEVELOPS SUSTAINABLE RELATIONS WITH CUSTOMERS.

MAINTAINS RICH AND VARIED TECHNICAL EXPERTISE.

USES WORLD-CLASS RESOURCES.

*A WIDE RANGE OF PRODUCTS*



*GEAR  
MOTORS*



*MOTORIZED ROLLERS*



*SYSTEMS*



*BLOWERS*



*CENTRIFUGAL  
PUMPS*



*COMPONENT  
MOTOR  
ASSEMBLIES*



*ELECTRIC PUMPS*

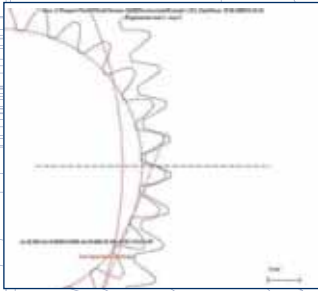
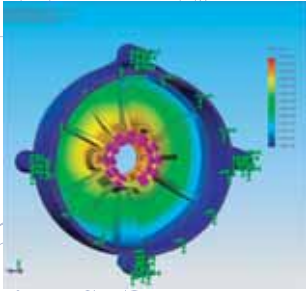
## A WIDE RANGE OF APPLICATIONS

SIREM'S MOTORIZATION SOLUTIONS ARE USED FOR VARIOUS APPLICATIONS



- MILK COOLING TANKS
- WHIRLPOOL & SPAS
- SHOWER SYSTEMS
- INDUSTRIAL APPLICATIONS
- CONVEYORS
- REVERSE VENDING SYSTEMS
- SCROLLING ADVERTISING PANELS
- ACCESS CONTROL
- POOL COVER MOTORIZATIONS
- SWIMMING POOLS
- CHECK OUT

## EXTENDED RESOURCES



### DESIGN

MORE THAN 10% OF THE PERSONNEL IS DEDICATED TO RESEARCH & DEVELOPMENT.

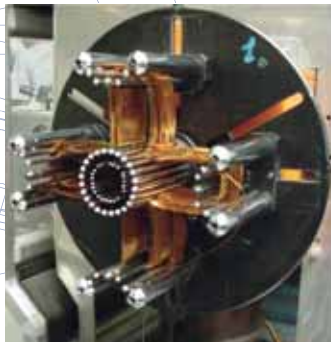
ADVANCED DESIGN AND MECHANICAL SIMULATION TOOLS:

- 3D CAD: **SOLIDWORKS**
- MATERIAL RESISTANCE SIMULATION: **COSMOS**
- GEAR DRIVING SIMULATION: **KISSsoft**

THREE-DIMENSIONAL HIGH-RESOLUTION CONTROL EQUIPMENT (1  $\mu$ M)

TEST LABORATORY: TECHNICAL QUALIFICATION AND DESTRUCTIVE TESTING

A PRODUCT AND SYSTEM CERTIFICATION POLICY UP TO STANDARDS (NF, TÜV, UL...)



### MANUFACTURING

250,000 MOTORS PRODUCED EACH YEAR ON TWO SITES (10,000 SQ.M OF INDOOR SURFACE AREA).

RESPONSIVE INDUSTRIAL ORGANIZATION:

- JUST-IN-TIME MANUFACTURING
- CLOSE PARTNERSHIP WITH A LIMITED NUMBER OF PREFERRED SUPPLIERS
- BASED ON AN INTEGRATED ENTERPRISE RESOURCE PLANNING (ERP).

100% TESTING AND INSPECTION OF ALL PRODUCTS

A QUALITY SYSTEM IN THE ISO 9000 CERTIFICATION PROCESS (V2000)



CHEMIN DU PILON - SAINT MAURICE DE BEYNOST  
01708 MIRIBEL CEDEX - FRANCE

TÉL : +33 (0)4 78 55 83 00 - FAX : +33 (0)4 78 55 83 19

[WWW.SIREM.FR](http://WWW.SIREM.FR)

